



Firestone Enverge™ Cavity Wall Products

# TWO NEW CI OPTIONS FOR MORE 'R' IN LESS SPACE.



## INTRODUCING

Enverge™ CI Glass Exterior Wall Insulation  
and Enverge™ CI Foil Exterior Wall Insulation

Firestone Building Products has designed two new ci options, both with low global-warming potential (GWP), to help support your building envelope goals.

In fact, you won't find a better high-performance ci insulation that's easier to install or incorporate into your building design.

## FEATURES & BENEFITS

- Firestone foam technology incorporates an HCFC-free blowing agent that does not contribute to the depletion of the ozone
- Fire-resistant core formulation offers FSI≤25 and SDI≤450
- NFPA 285 fire-tested assemblies offer design flexibility
- Higher R-value per inch as compared to other dimensional rigid insulations, which contributes to the overall design solution for energy efficiency and potential for LEED® credits
- Qualifies as an air barrier system component, which reduces heating and air conditioning costs
- With the proper detailing, Enverge CI Foil can be part of the air- and water-resistant barriers, as well as the vapor retarder in the exterior wall

- Product solutions available from 1" to 2.5" thicknesses in ½" increments
- Comprehensive Firestone Building Products code-compliant wall assembly construction details

All NFPA 285-tested assemblies may be constructed without the requirement of exterior gypsum sheathing while maintaining compliance, which means labor and product savings!



**Firestone**  
BUILDING PRODUCTS  
NOBODY COVERS YOU BETTER.™

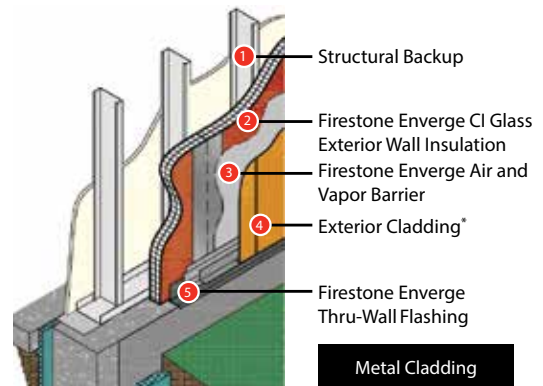
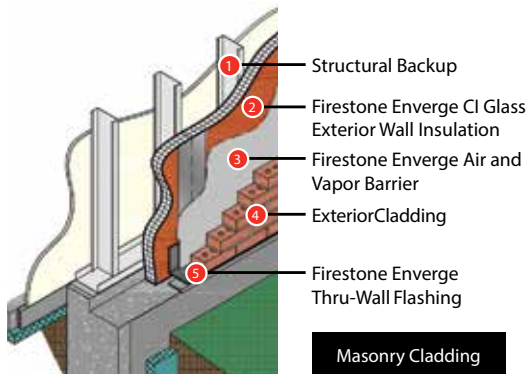
# The right products for masonry or metal-clad construction.

Firestone offers two facer options to meet a range of assembly design requirements for your high-performance building envelope. Whether you're an architect, construction project manager or installation contractor, consider Firestone Building Products as your single-source solution for ci cavity wall insulation.

## ENVERGE CI GLASS EXTERIOR WALL INSULATION

### Coated Fiberglass Mat Facer

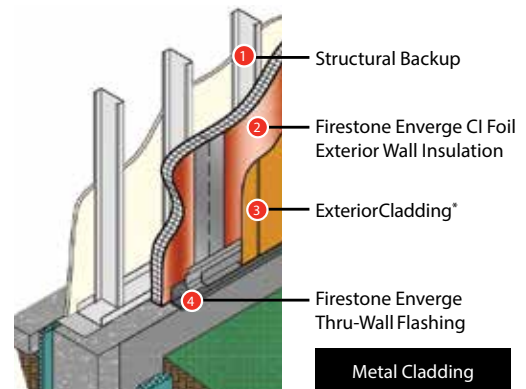
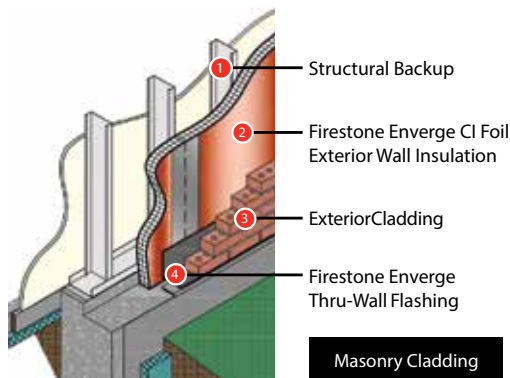
(ASTM C1289 Type II Class 2)



## ENVERGE CI FOIL EXTERIOR WALL INSULATION

### Aluminum Foil Facer

(ASTM C1289 Type I Class 1)



NOTE: Details shown are conceptual details only. The design or engineering professional of record is responsible for preparing all drawings and specifications to address project-specific requirements and conditions.

\*Firestone UNA-CLAD™ metal wall panels may be a great choice for aesthetics, while also offering the benefits of a product backed by a Firestone Warranty.

For more information, contact your local Sales Rep or email [ENVERGE@FIRESTONEBP.COM](mailto:ENVERGE@FIRESTONEBP.COM).

FIRESTONE BUILDING PRODUCTS  
250 WEST 96<sup>TH</sup> ST., INDIANAPOLIS, IN 46260  
CORPORATE OFFICE: (800) 428-4442 • (317) 575-7000  
[FIRESTONEBP.COM](http://FIRESTONEBP.COM)

[/FirestoneBuildingProducts](https://www.facebook.com/FirestoneBuildingProducts)

[@FirestoneBPCo](https://twitter.com/FirestoneBPCo)



**Firestone**  
BUILDING PRODUCTS  
**NOBODY COVERS YOU BETTER.™**